

MAP
of
SAN FRANCISCO BAY REGION
showing
DISTRIBUTION
of
SHELL HEAPS



LEGEND

- MOUNDS STILL PRESENT
- MOUNDS DISAPPEARED
- ▲ MINOR CAMP SITES

PACIFIC
OCEAN

SAN FRANCISCO

BAY

SANTA CRUZ MTS

EXPLANATION OF PLATE 32.

Fig. 1.—Mound no. 75, situated at the edge of the marsh in the mouth of a small side canyon, on the north side of Ross Valley. The mound adjoins a peculiar isolated rock outcrop. Diameter of mound 100×150 ft. through the base; height about 15 ft. View looking north.

Fig. 2.—Mound no. 10, situated on the highland edge of the marsh, below Mill Valley. Dimensions 200×450 ft. through the base; height 20 ft. Diameter of the truncated top 90 ft. View looking southeast.



Fig. 1.

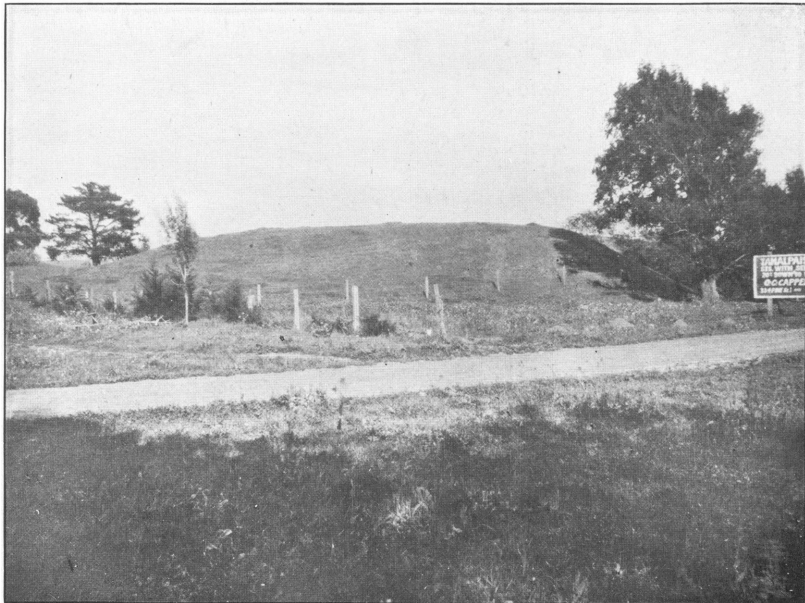


Fig. 2.

EXPLANATION OF PLATE 33.

Fig. 1.—Mound no. 271, situated on the south bank of San Pablo Creek. Dimensions 240×300 ft.; height about 12 ft.; total depth of the shell over 20 ft. The mound has been cultivated for more than fifty years. View looking east.

Fig. 2.—Mound no. 295, situated on the shore edge of the marsh at Ellis Landing, near Richmond. Dimensions 245×460 ft.; height prior to excavation 17 ft.; base of the mound is 11-18 ft. below sea level. View looking southeast across the marsh and bay at flood tide.



Fig. 1.

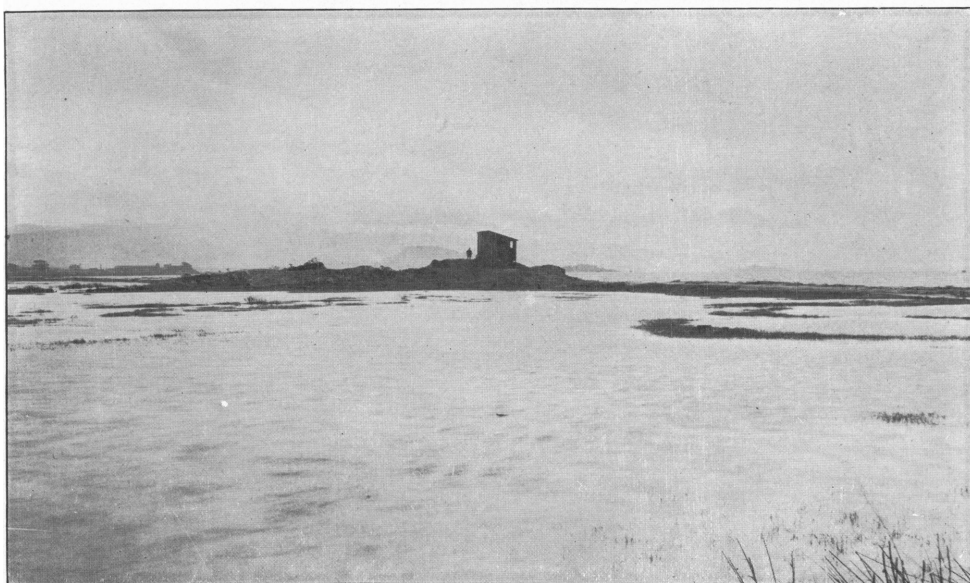


Fig. 2.

EXPLANATION OF PLATE 34.

Fig. 1.—Mound no. 283, situated at Chinese Camp, on the west side of Potrero San Pablo. The deposit lies on a clay slope 7-8 ft. higher than the beach. Present dimensions about 150×200 ft.; height 9 ft. The seaward extension of the mound may possibly lie buried in the tide flat off shore. View looking northwest.

Fig. 2.—Mound no. 290, situated on the shore near the northwestern extremity of Brooks Island. The deposit lies on a slope consisting partly of solid rock, and extends 15 ft. below high tide level. The visible portion extends 210 ft. along the beach and rises 12 ft. above the beach level. View looking southeast.



Fig. 1.



Fig. 2.

EXPLANATION OF PLATE 35.

Fig. 1.—Mound no. 372, situated at the marsh edge, corner of Poplar avenue and H street, San Mateo. Dimensions 150×225 ft. through the base; height may have been as much as 12-15 ft. Made up largely of oyster shells. Shells now being screened and put to various uses. View looking northeast.

Fig. 2.—Illustration of a large sand dune rising about 20 ft. out of the reclaimed tule lands near the western extremity of Bradford Island. This island is encircled by various channels of the San Joaquin River a short distance east of the point where this river joins with the Sacramento, to enter Suisun Bay. Prior to reclamation, the lowlands, which are composed almost entirely of solid peat up to 50 ft. in depth, were continually flooded; but nearly all of these peculiar eminences appear to have been occupied by the aborigines. View looking south.



Fig. 1.



Fig. 2.

UNIVERSITY OF CALIFORNIA PUBLICATIONS—(CONTINUED)

AMERICAN ARCHAEOLOGY AND ETHNOLOGY.—Continued.

- Vol. 7. No. 1. The Emeryville Shellmound, by Max Uhle. Pages 106, Plates 12, June, 1907. Price, 1.25
- No. 2. Recent Investigations bearing on the Question of the Occurrence of Neocene Man in the Auriferous Gravels of the Sierra Nevada, by William J. Sinclair (in press).
- No. 3. The Geography and Dialects of the Miwok Indians, by S. A. Barrett (in press).
- No. 4. The Ethnography of the Cahuilla Indians, by A. L. Kroeber (in press).
- No. 5. A Mission Record of the California Indians, from a Manuscript in the Bancroft Library, by A. L. Kroeber (in press).

GRAECO-ROMAN ARCHAEOLOGY. (Large Octavo).

- Vol. 1. The Tebtunis Papyri, Part 1. Edited by Bernard P. Grenfell, Arthur S. Hunt, and J. Gilbert Smyly. Pages 690, Plates 9, 1902. Price, \$16.00
- Vol. 2. The Tebtunis Papyri, Part 2 (in press).
- Vol. 3. The Tebtunis Papyri, Part 3 (in preparation).

EGYPTIAN ARCHAEOLOGY. (Quarto).

- Vol. 1. The Hearst Medical Papyrus. Edited by G. A. Reisner. Hieratic text in 17 facsimile plates in collotype, with introduction and vocabulary. pages 48, 1905. (J. C. Hinrichs, Leipzig, 25 Marks) Price, \$8.00
- Vol. 2. The Early Dynastic Cemeteries at Naga-ed-Der. Part I, by G. A. Reisner (in press).
- Vol. 3. The Early Dynastic Cemeteries at Naga-ed-Der. Part II. By A. C. Mace. (in press.)
- Vol. 4. The Predynastic Cemetery at Naga-ed-Der. The Anatomical Material, by Elliott Smith (in preparation).
- Vol. 5. The Cemetery of the Second and Third Dynasties at Naga-ed-Der, by A. C. Mace (in press).
- Vol. 6. The Cemetery of the Third and Fourth Dynasties at Naga-ed-Der, by G. A. Reisner (in preparation).
- Vol. 7. The Coptic Cemeteries of Naga-ed-Der, by A. C. Mace (in preparation).

ANTHROPOLOGICAL MEMOIRS. (Quarto).

- Vol. I. Explorations in Peru, by Max Uhle (in preparation).
- No. 1. The Ruins of Moche.
- No. 2. Huamachuco, Chincha, Ica.
- No. 3. The Inca Buildings of the Valley of Pisco.

SPECIAL VOLUMES.

The Book of the Life of the Ancient Mexicans, containing an account of their rites and superstitions; an anonymous Hispano-American manuscript preserved in the Biblioteca Nazionale Centrale, Florence, Italy. Reproduced in fac-simile, with introduction, translation, and commentary, by Zelia Nuttall.

Part I. Preface, Introduction, and 80 Fac-simile plates in colors. 1903.

Part II. Translation and Commentary. (In press).

Price for the two parts \$25.00

Facsimile of a Map of the City and Valley of Mexico, by Alonzo de Santa Cruz, Cosmographer of Philip II of Spain. Explanatory text by Zelia Nuttall. Map in 7 sheets, 17×20 inches. (in preparation).

The Department of Anthropology, Its History and Plan, 1905. Sent free on application to the Department, or to the University Press.

UNIVERSITY OF CALIFORNIA PUBLICATIONS—(CONTINUED)

ASTRONOMY.—W. W. Campbell, Editor. (Lick Observatory, Mt. Hamilton, Cal.)
Publications of the Lick Observatory.—Volumes I–V completed. Volume VI (in progress).

BOTANY.—W. A. Setchell, Editor. Price per volume \$3.50. Volume I (pp. 418) completed. Volume II (in progress).

EDUCATION.—Edited by the Department of Education. Price per volume \$2.50.

ENGINEERING.—Edited under the direction of the Engineering Departments.
This series will contain contributions from the Colleges of Mechanics, Mining, and Civil Engineering. Volume I in progress.

GEOLOGY.—Bulletin of the Department of Geology. Andrew C. Lawson, Editor.
Price per volume \$3.50. Volumes I (pp. 428); II (pp. 450), III (475) and IV (462), completed. Volume V (in progress).

PATHOLOGY.—Alonzo Englebert Taylor, Editor. Price per volume, \$2.50.
Volume I (pp. 347) completed.

CLASSICAL PHILOLOGY.—Edward B. Clapp, William A. Merrill, Herbert C. Nutting, Editors. Price per volume \$2.00. Volume I (in progress).

PHILOSOPHY.—Volume I, completed. Price, \$2.00.

PHYSIOLOGY.—Jacques Loeb, Editor. Price per volume \$2.00. Volume I (pp. 217) completed. Volume II (pp. 215) completed. Volume III (in progress).

ZOOLOGY.—W. E. Ritter, Editor. Price per volume \$3.50. Volumes I (pp. 317) and II (pp. 382) completed. Volume III (in progress)

UNIVERSITY CHRONICLE.—An official record of University life, issued quarterly, edited by a committee of the faculty. Price, \$1.00 per year. Current volume No. IX.

Address all orders, or requests for information concerning the above publications to **The University Press, Berkeley, California.**

European orders for numbers of the series in *American Archaeology and Ethnology* may be addressed to **Otto Harrassowitz, Leipzig**, or **R. Friedländer & Sohn, Berlin.**