

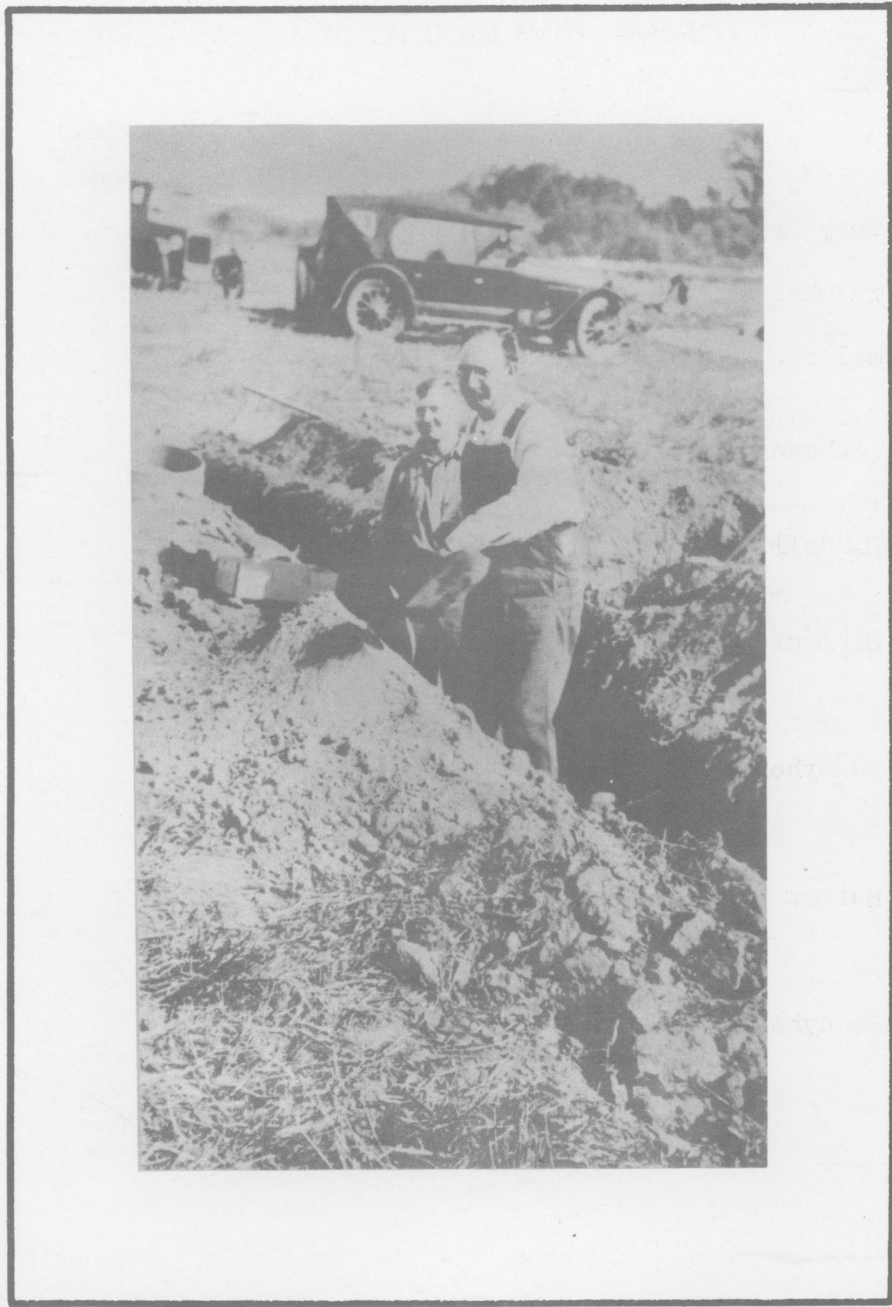
Reports of the
UNIVERSITY OF CALIFORNIA
ARCHAEOLOGICAL SURVEY

No. 42

CURRENT VIEWS ON GREAT BASIN ARCHAEOLOGY

Issued April 10, 1958

The University of California Archaeological Survey
Department of Anthropology
University of California
Berkeley 4, California



Robert H. Lowie as an archaeologist, 1926

CURRENT VIEWS ON GREAT BASIN ARCHAEOLOGY

Contents

	Page
Dedicatory Preface by Robert F. Heizer	1
M. A. Baumhoff History of Great Basin Ethnography.	1
W. J. Wallace Archaeological Investigations in Death Valley National Monument 1952-1957.	7
H. H. Aschmann Great Basin Climates in Relation to Human Occupance.	23
F. A. Riddell The Eastern California Border: Cultural and Temporal Affinities.	41
M. A. Baumhoff and R. F. Heizer Outland Coiled Basketry from the Caves of West Central Nevada.	49
J. A. Bennyhoff and R. F. Heizer Cross-Dating Great Basin Sites by Californian Shell Beads.	60
M. J. Harner Lowland Patayan Phases in the Lower Colorado River Valley and Colorado Desert.	93
J. A. Bennyhoff The Desert West: A Trial Correlation of Culture and Chronology. (Prepared from data submitted and discussed by participants at a seminar preceding the Fourth Annual Great Basin Confer- ence, August, 1957.).	98

Illustrations

Robert H. Lowie as an archaeologist, 1926.	Frontispiece
--	--------------

Illustrations (continued)

		Following page
Map 1	Death Valley National Monument	10
Fig. 1	Artifacts from Death Valley.	12
Fig. 1	Mean Annual Precipitation.	26
Fig. 2	Precipitation During a General Winter Storm. . .	26
Fig. 3	Precipitation During a Summer Rainy Spell in the Southwest	28
Fig. 4	Seasonal Rainfall Distribution	28
Plate 1	Fine Coiled Basketry from the Humboldt Valley. .	59
Map 1	Western Great Basin Sites from Which Shell Artifacts Have Been Recovered.	76
Fig. 1	Shell Artifacts From the Western Great Basin . .	92
Map 1	Limits of Great Basin and Boundary of Portion of Desert West Under Discussion at Meetings Preceding Great Basin Conference, 1957	100
Fig. 1	Tentative Chronology of Selected Great Basin Cultures	112